

HOW TO RECORD A CONFIGURATION ON DAS50

We are going to see how to record a configuration in the DAS50 intern memory.

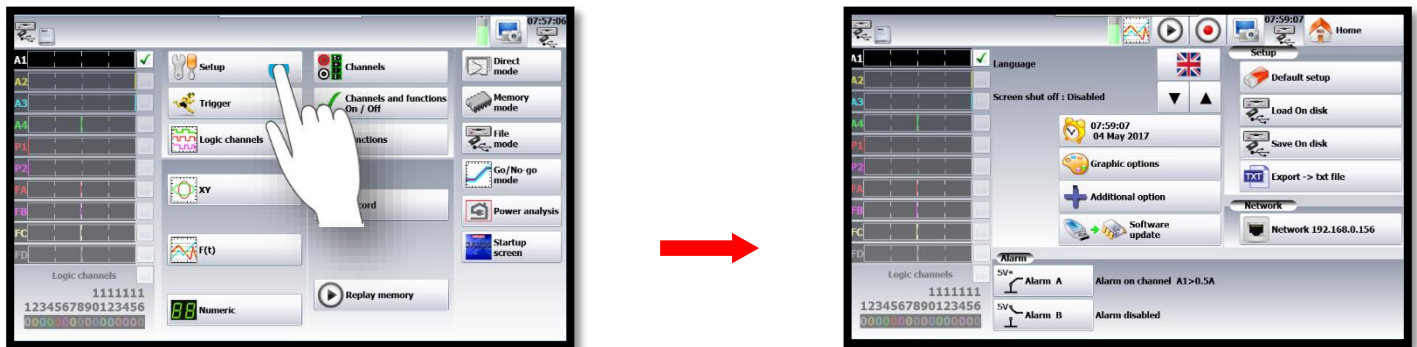
I: Requisites

Must have configured the channel(s) you want to record.

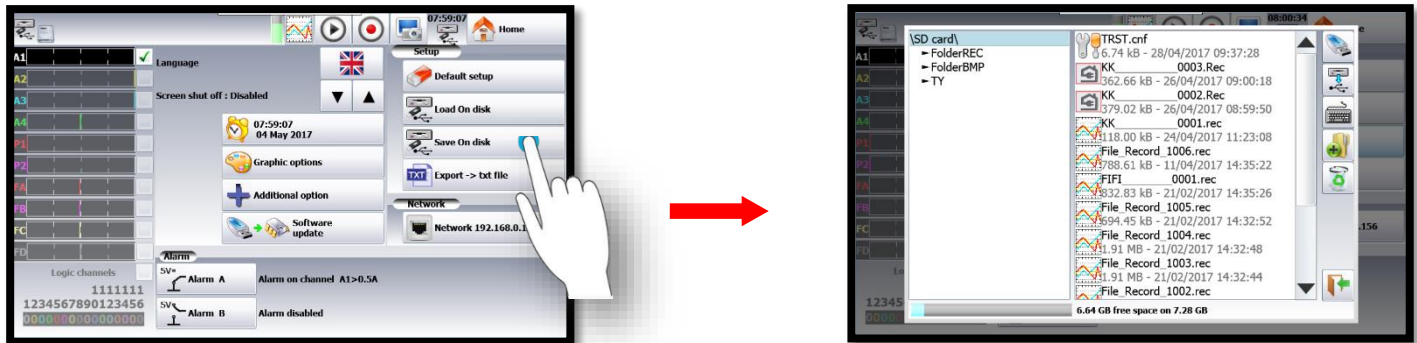
For the channel configuration, refer to the note **NA_ENR_DAS50_CONF_VOIE**.

II: Configuration record

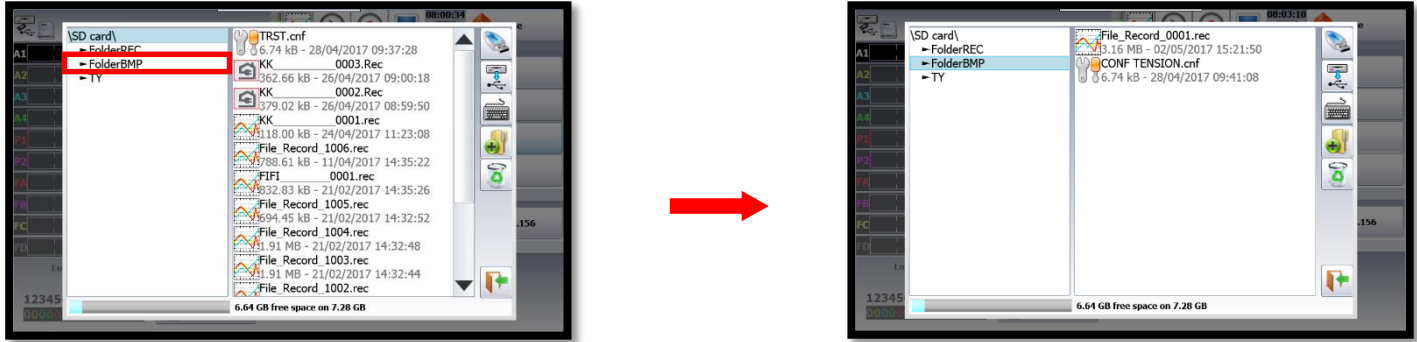
1- Access to the "Setup" menu by pressing the corresponding button:



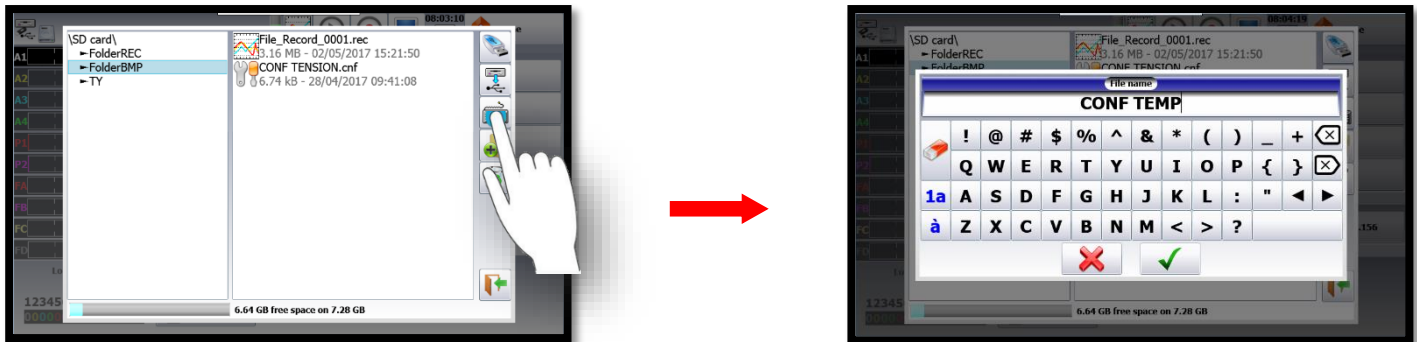
2- Access to the intern memory of the device by pressing button "Save on disk":



3- Choose the folder where you want to record your configuration. Here, we choose the: "FolderBMP" folder:



4- You can choose the folder's name. In this case we choose "CONF TEMP":



5- Press button "Validate" to record your folder:

