

HOW TO SET A RECORD WITH DASLaB

The software DASLaB enables to remotely control a DAS240 recorder. It also enables to download the records.

We are going to see how to set a record with two triggers (one to launch the record, the other to stop it). To do so, we will set the voltage on the first channel. We will record this channel when the voltage will be between 10 and 20V.

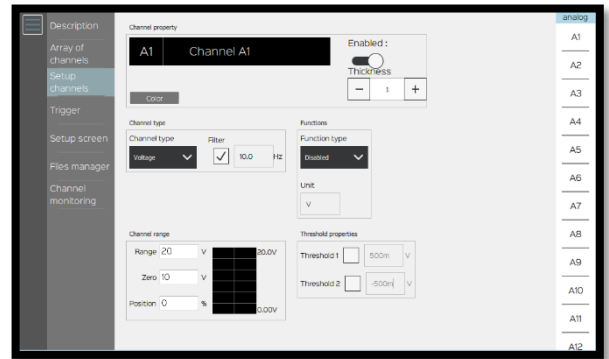
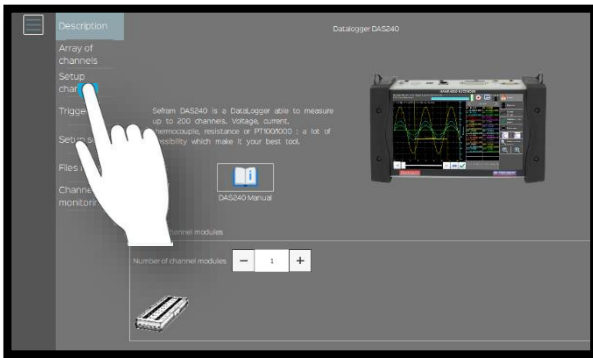
I: Requisites

We have to set the channel that we want to record.

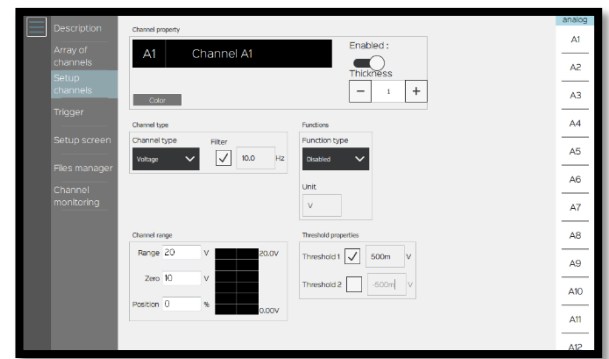
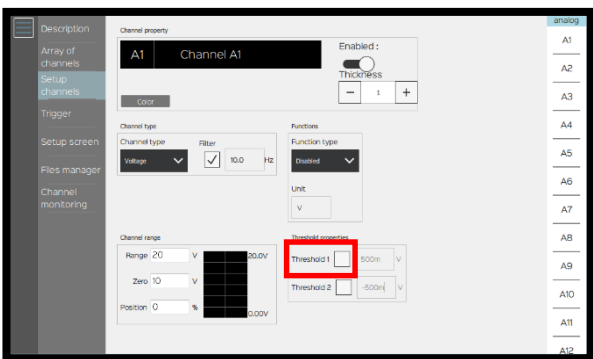
For channel 1 configuration, refer to the note [NA_ENR_DASLAB_CONF_VOIE](#).

II: Setting a record with two triggers

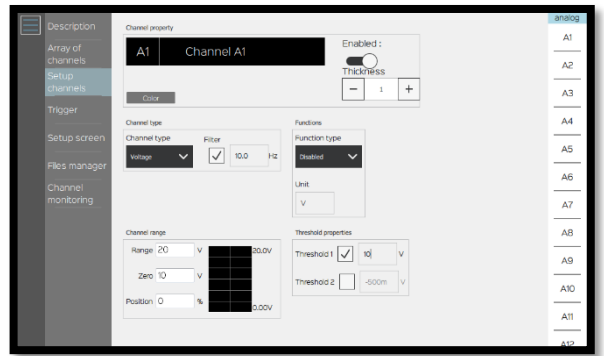
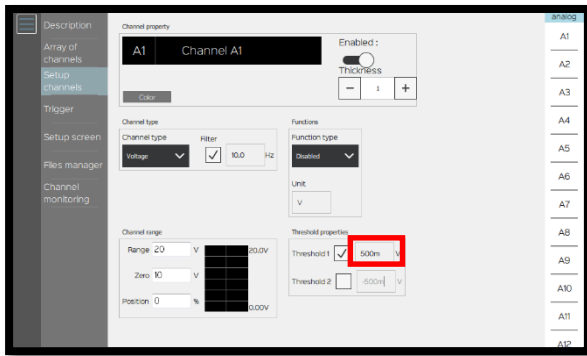
1- Go to channel 1 settings by pressing the channel to be set:



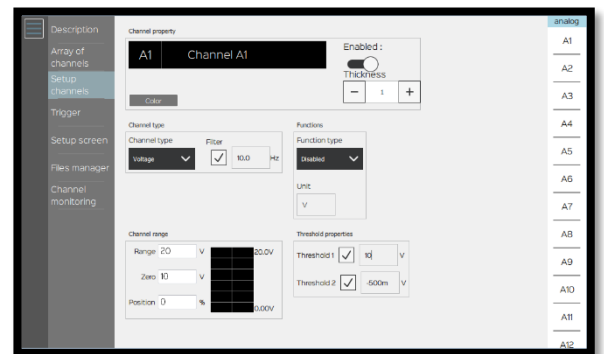
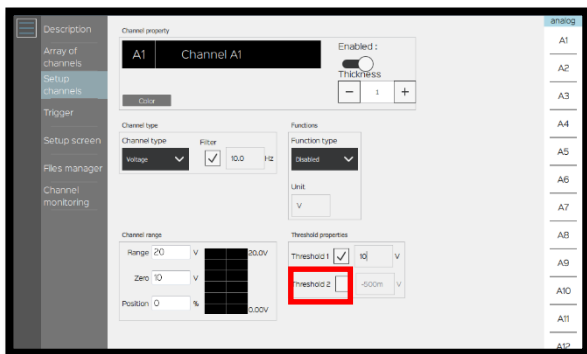
2- Select the first threshold:



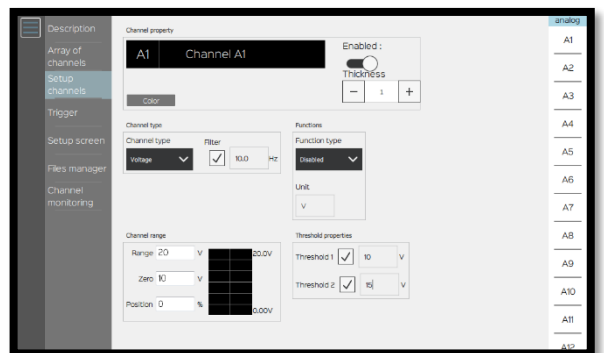
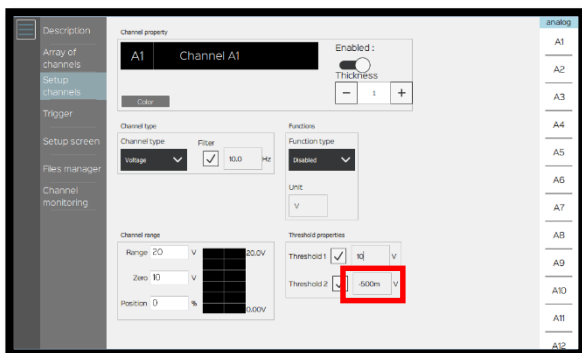
3- Choose the value of the first threshold , here: a 10V threshold:



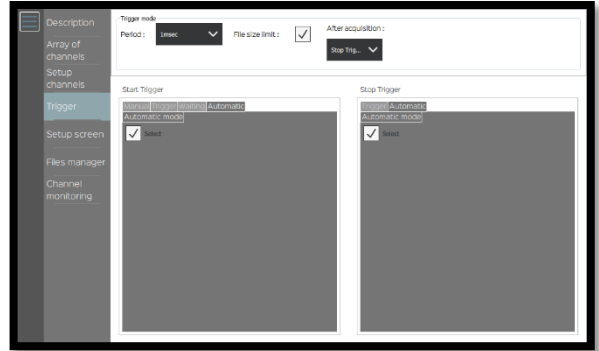
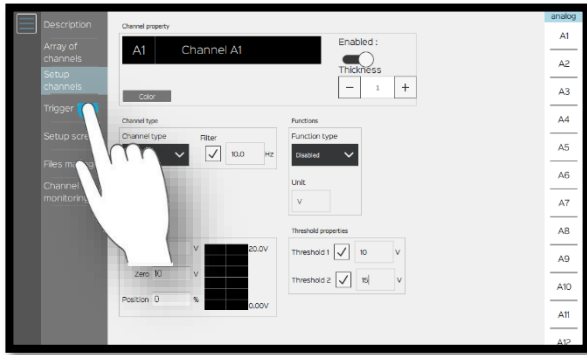
4- Select the second threshold:



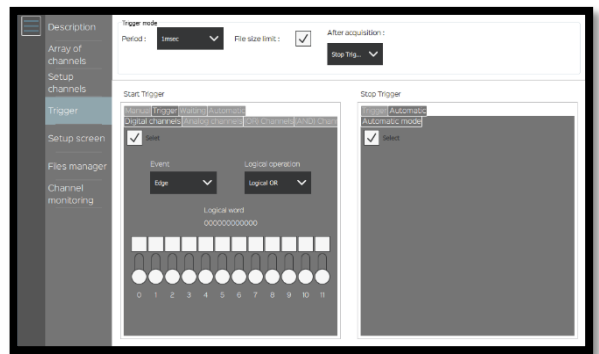
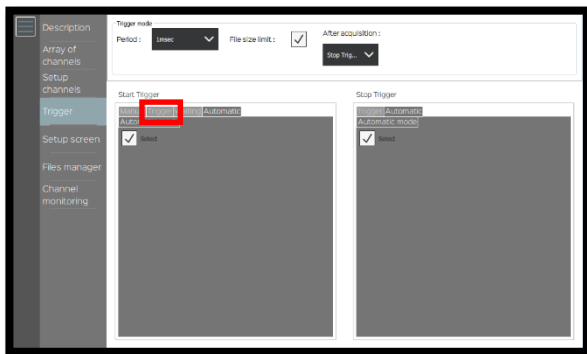
5- Choose the value of the second threshold, here: a 15V threshold:



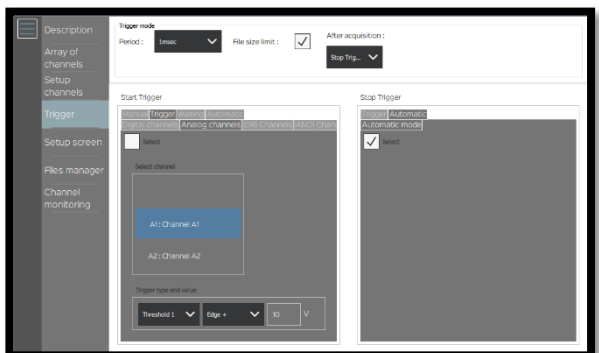
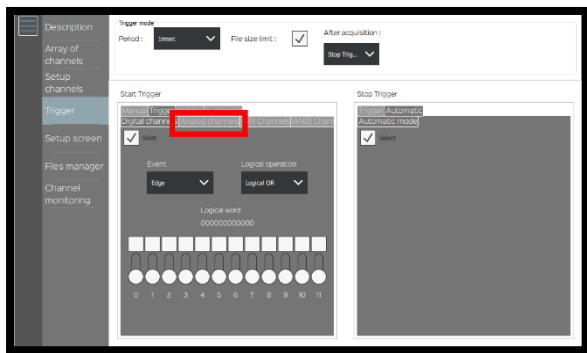
6- Go to the menu "Trigger":



7- Select "Trigger" in the start menu:

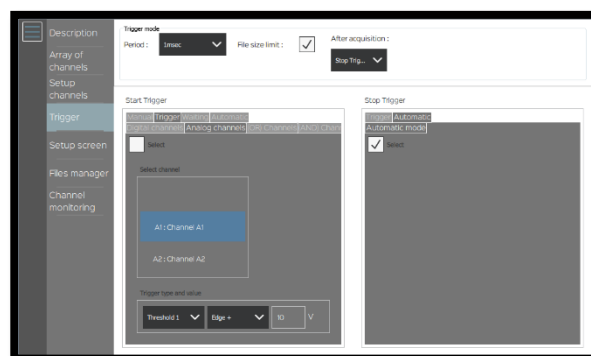
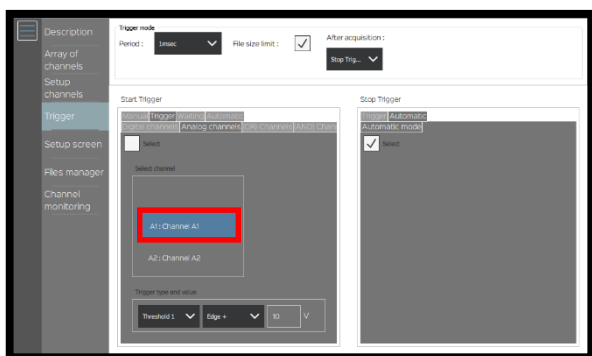


8- Choose the channel type, here we will use an analog channel:

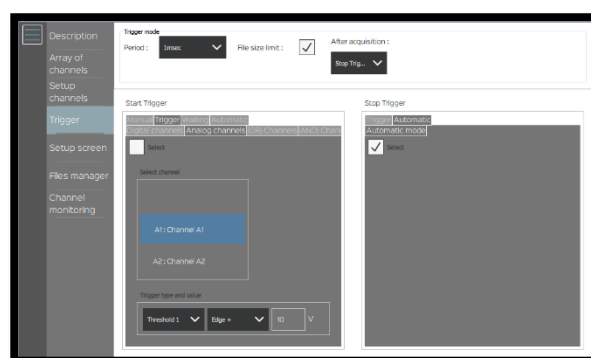
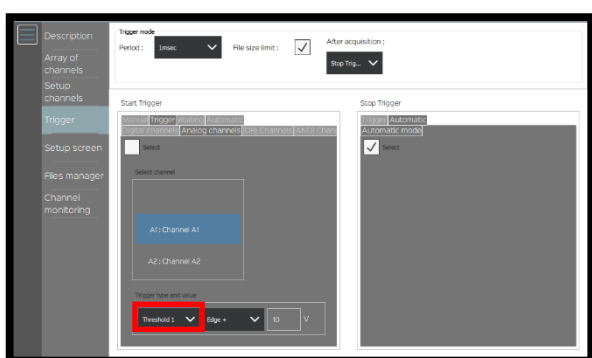


It is possible to use different channel types: logic, analog, etc.

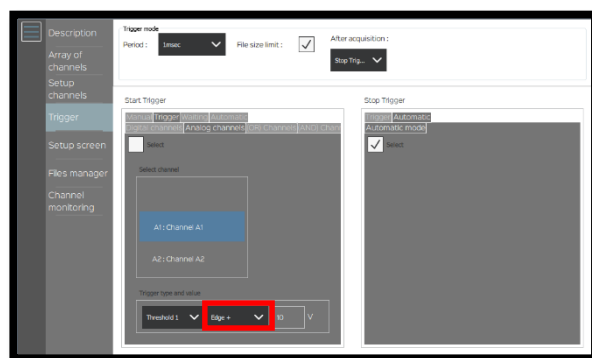
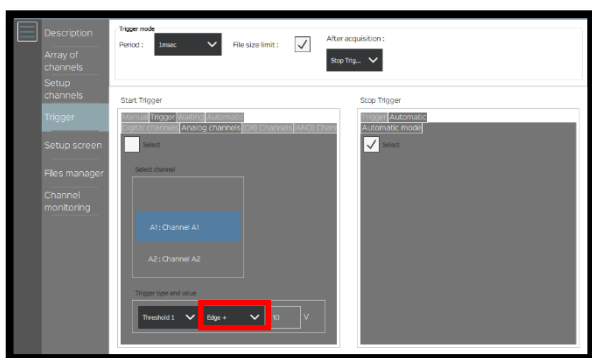
9- Select the channel, in our example it's the first one:



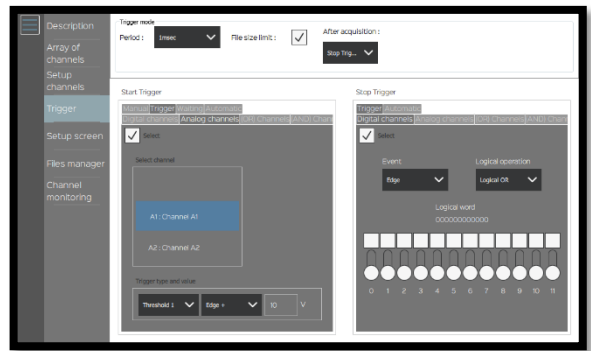
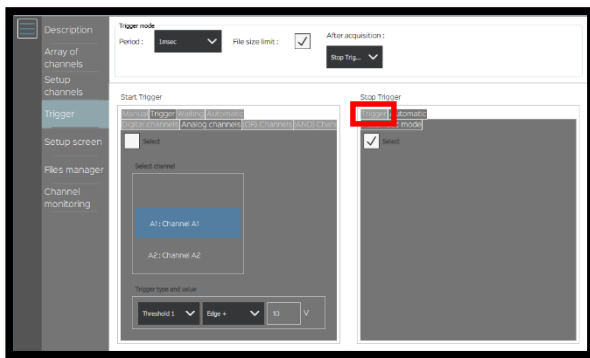
10- Choose the start threshold, here: the threshold 1:



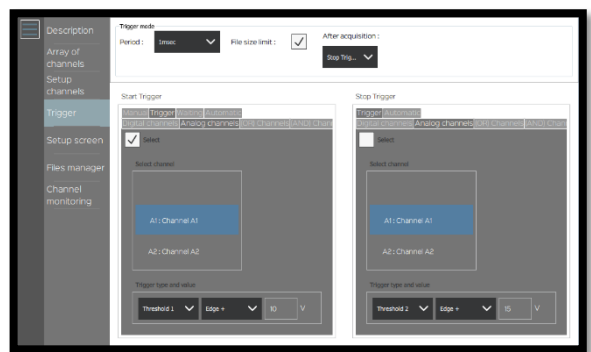
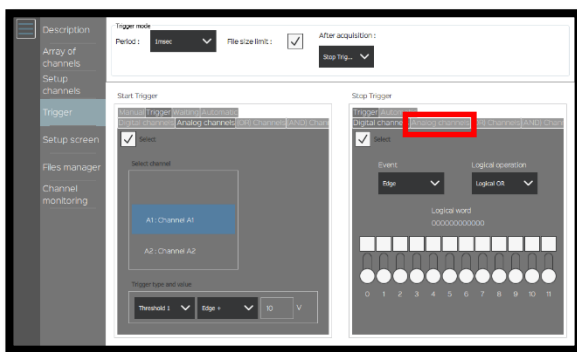
11- Choose when the trigger will start, here when the voltage becomes superior to 10V. So we will use "Edge+":



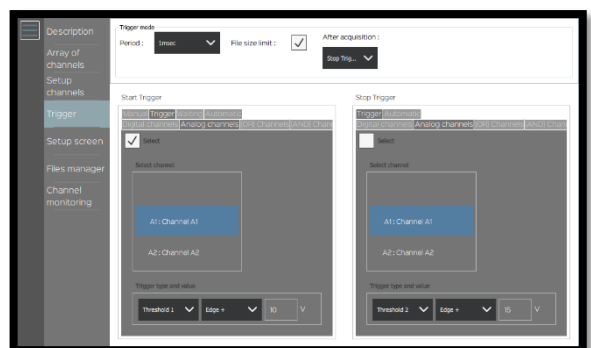
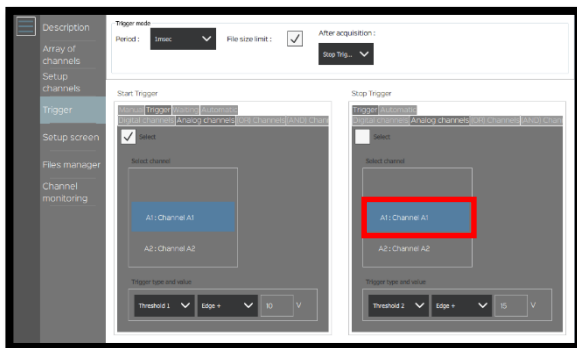
12- Select "Trigger" in the stop menu:



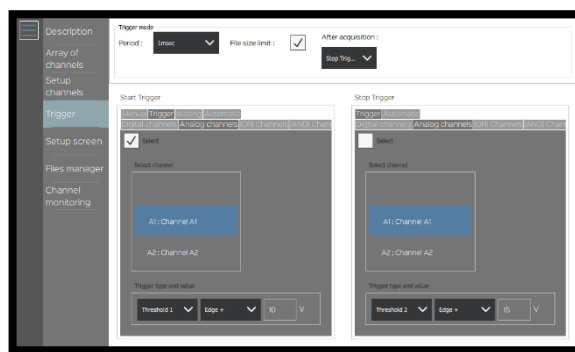
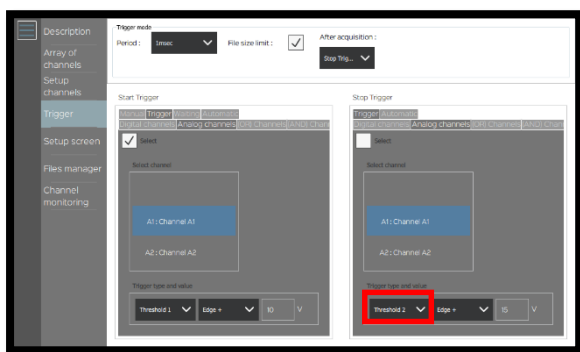
13- Select the channel type, here: analog channel:



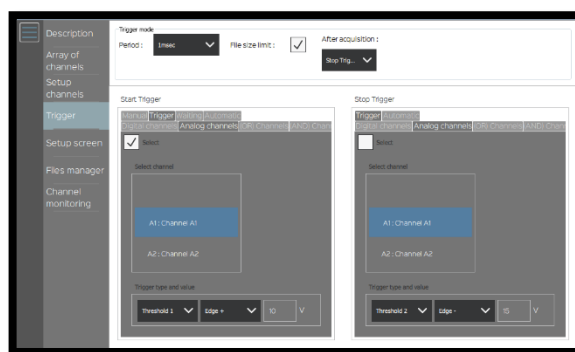
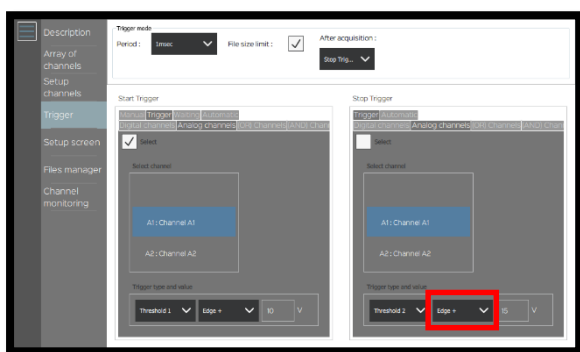
14- Select the channel, in our example it's the first one:



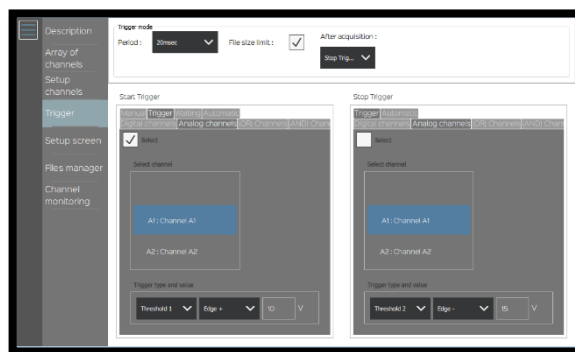
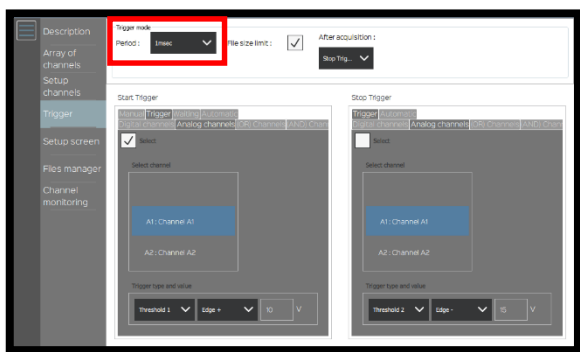
15- Choose the stop threshold, here: threshold 2:



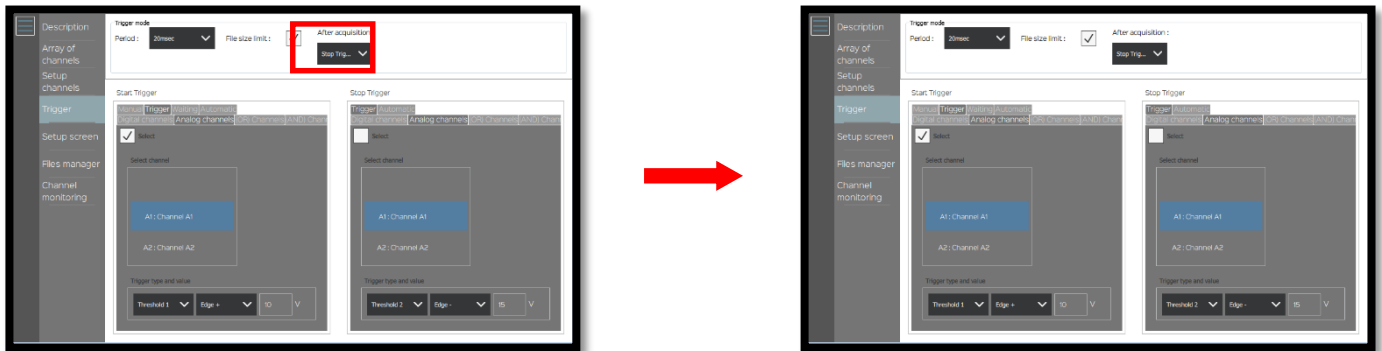
16- Choose when the trigger will end, here when the voltage becomes inferior to 15V. So we will use "Edge-":



17- Choose the acquisition period, here: "20ms":

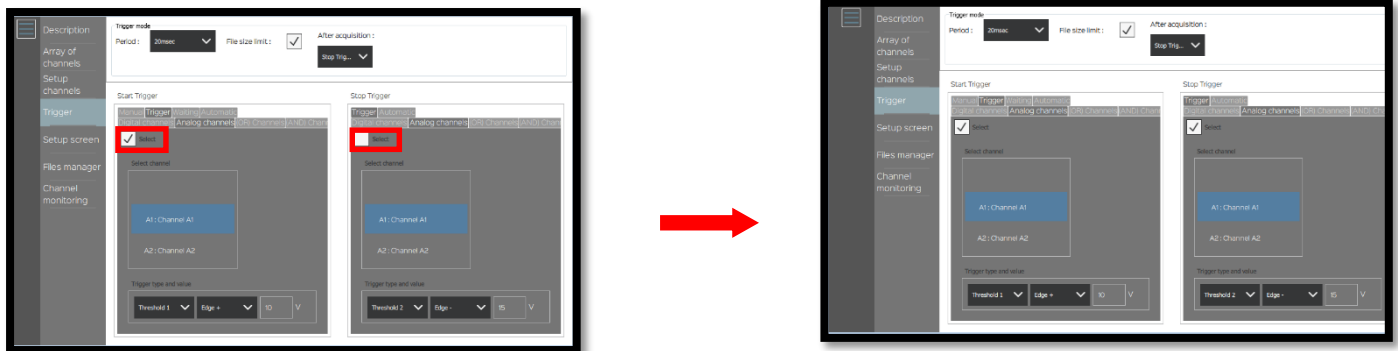


18- Set the “After acquisition”, here we want just one record. So we will use Stop “Trigger”:



It is possible to do many records, select “Rearm”. A new record will begin when the conditions will be respected:

19- Select both triggers:



20- The record is ready to start, only the part between 10 (rising edge) and 20V (falling edge) will be recorded, press “Send config”:

